

A Summary of the Year 2024 to 2025

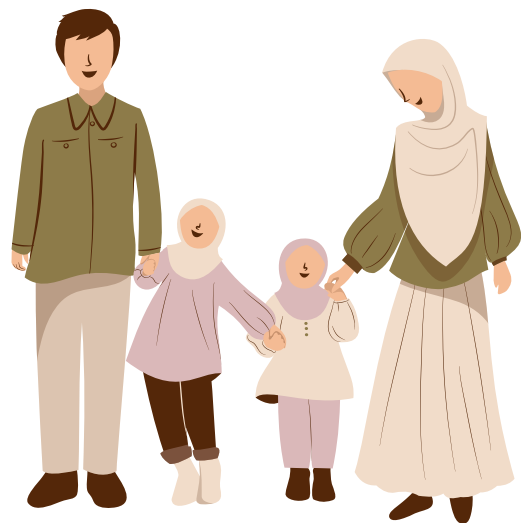
Welcare is a charity working with families and children up to the age of 13 throughout south London and East Surrey. Our mission is to work alongside parents and carers to give children secure and confident childhoods and to enable them to thrive in the future.

Thanks to the financial and prayerful support of your parish and congregation Welcare has been able to continue its mission to provide practical and emotional support to enable children and families to thrive.

Thank you!

★ Welcare's Achievements ★

**We worked
with 838
families**



**503 children
attended
group work
programmes**



**52 parents
attended
parenting
courses**



**15 fathers
completed the
Caring Dads
programme**



**255 families
received
individual 1:1
support**

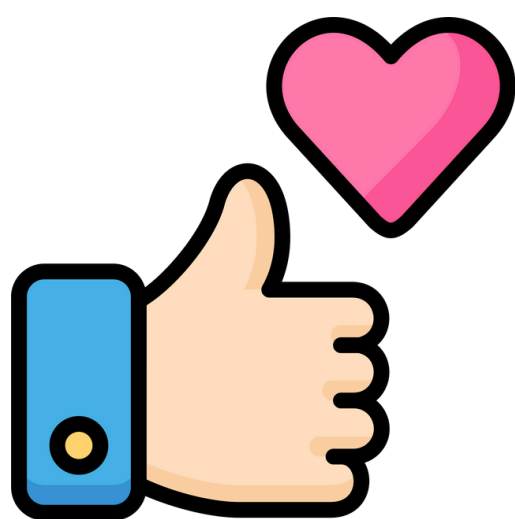


**£41,116 was
given as
added value**



e.g. crisis grants,
household items,
support with energy costs

**75% of families
reported positive
changes from
working with
Welcare**



**51 parish churches
supported our
work in the last
financial year**



For more information on our work: welcare.org

Or to watch our supporter video: welcare.org/supportervideos

Or you can follow us on social media:



/welcareuk



@welcareuk.bsky.social



welcare_uk